



DAWN SANDOVAL

Residential

2 Bedrooms

Apartment

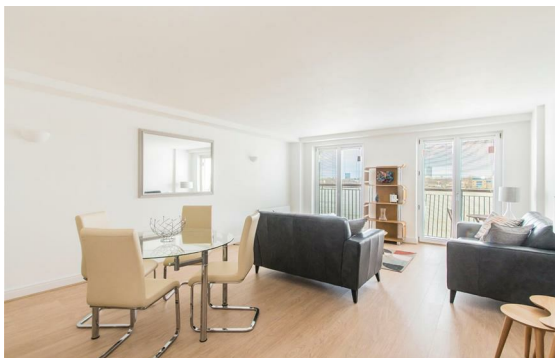
Located in 18
Westferry Road

£2,600 PCM



info@dawnsandovalresidential.co.uk www.dawnsandovalresidential.co.uk

0207 093 1702



**DAWN
SANDOVAL**
Residential

5 Indescon Square

Lightermans Road

London

E14 9DQ

0207 093 1702

info@dawnsandovalresidential.

www.dawnsandovalresidential.co.uk

Dawn Sandoval Residential are delighted to offer this modern well-presented riverside apartment to the rental market. The property is located within the exclusive Gated Millennium Harbour Development. The spacious apartment offers two double bedrooms and two bathrooms as well as a well-appointed fitted kitchen with separate utility room. This fabulous apartment located on the third floor boasts a good sized balcony offering direct river views across the Thames from not only the reception but both bedrooms too. The apartment also benefits from secured parking as well as 24 hour concierge and luxury leisure facilities to include a gym, sauna and solarium. Offered furnished, available immediately

Energy Efficiency Rating: C

Agents Note: Whilst every care has been taken to prepare these particulars, they are for guidance purposes only. All measurements are approximate and are for general guidance purposes only and whilst every care has been taken to ensure their accuracy, they should not be relied upon and potential buyers/tenants are advised to recheck the measurements.